

CLARA OLDHAM
D.B. 123 PG. 689

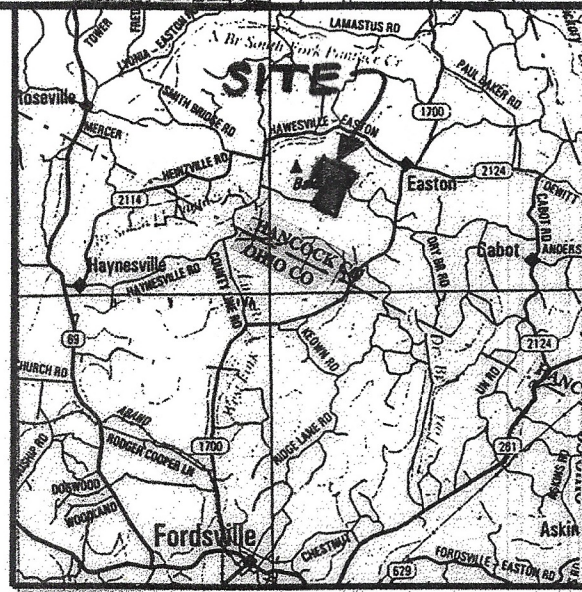
ELLEN BANKS
D.B. 64 PG. 72

ELLEN BANKS
D.B. 62 PG. 417
D.B. 45 PG. 111

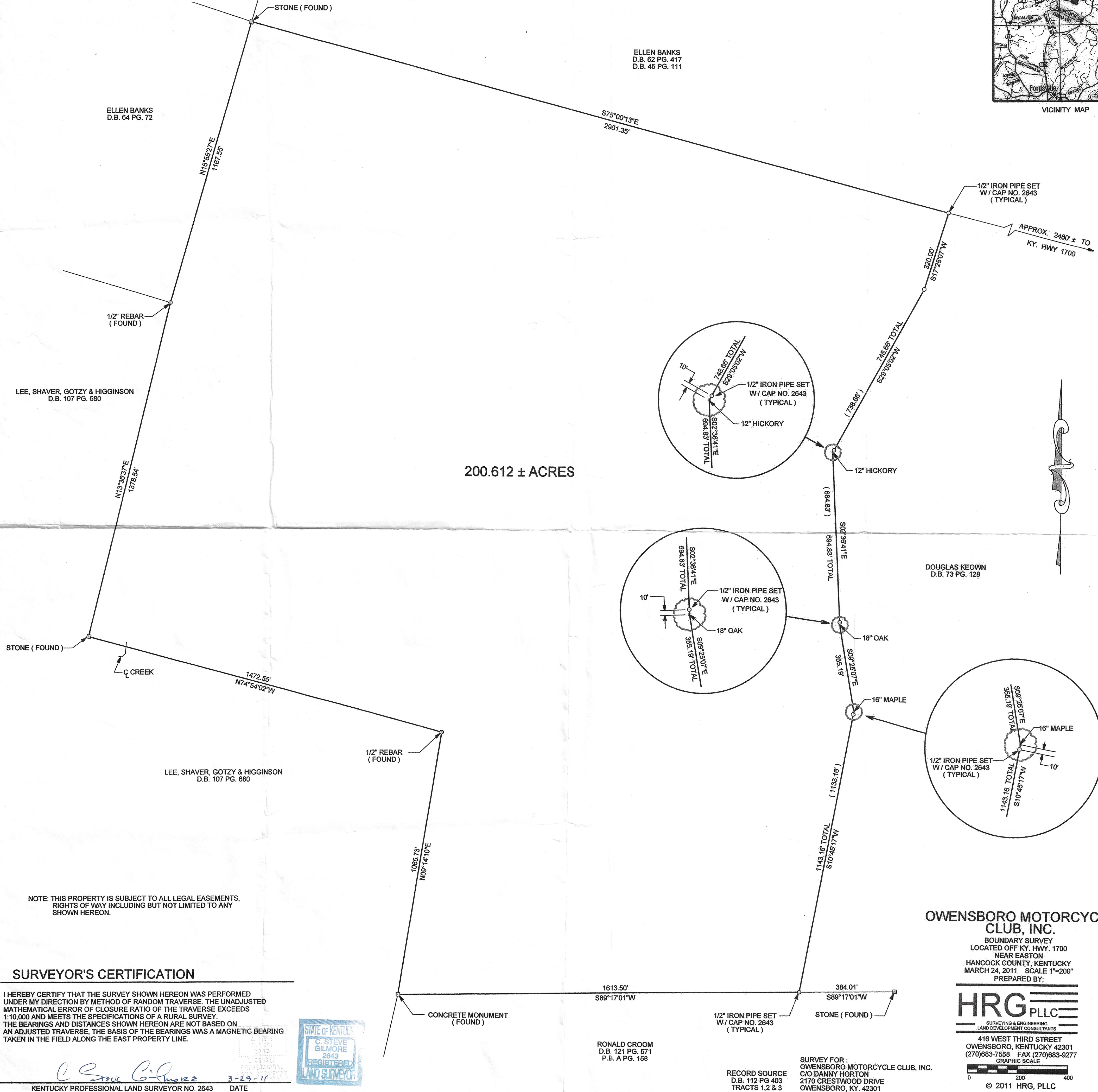
LEE, SHAVER, GOTZY & HIGGINSON
D.B. 107 PG. 680

LEE, SHAVER, GOTZY & HIGGINSON
D.B. 107 PG. 680

200.612 ± ACRES



VICINITY MAP



NOTE: THIS PROPERTY IS SUBJECT TO ALL LEGAL EASEMENTS,
RIGHTS OF WAY INCLUDING BUT NOT LIMITED TO ANY
SHOWN HEREON.

SURVEYOR'S CERTIFICATION

I HEREBY CERTIFY THAT THE SURVEY SHOWN HEREON WAS PERFORMED
UNDER MY DIRECTION BY METHOD OF RANDOM TRAVERSE. THE UNADJUSTED
MATHEMATICAL ERROR OF CLOSURE RATIO OF THE TRAVERSE EXCEEDS
1:10,000 AND MEETS THE SPECIFICATIONS OF A RURAL SURVEY.
THE BEARINGS AND DISTANCES SHOWN HEREON ARE NOT BASED ON
AN ADJUSTED TRAVERSE, THE BASIS OF THE BEARINGS WAS A MAGNETIC BEARING
TAKEN IN THE FIELD ALONG THE EAST PROPERTY LINE.



KENTUCKY PROFESSIONAL LAND SURVEYOR NO. 2643 DATE 3-29-11

RONALD CROOM
D.B. 121 PG. 571
P.B. A PG. 158

RECORD SOURCE
D.B. 112 PG. 403
TRACTS 1,2 & 3

SURVEY FOR:
OWENSBORO MOTORCYCLE CLUB, INC.
C/O DANNY HORTON
2170 CRESTWOOD DRIVE
OWENSBORO, KY. 42301

OWENSBORO MOTORCYCLE CLUB, INC.

BOUNDARY SURVEY
LOCATED OFF KY. HWY. 1700
NEAR EASTON
HANCOCK COUNTY, KENTUCKY
MARCH 24, 2011 SCALE 1"=200'
PREPARED BY:

HRG PLLC
SURVEYING & ENGINEERING
LAND DEVELOPMENT CONSULTANTS

416 WEST THIRD STREET
OWENSBORO, KENTUCKY 42301
(270)683-7558 FAX (270)683-9277
GRAPHIC SCALE

0 200 400
© 2011 HRG, PLLC