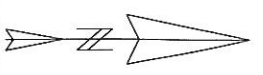


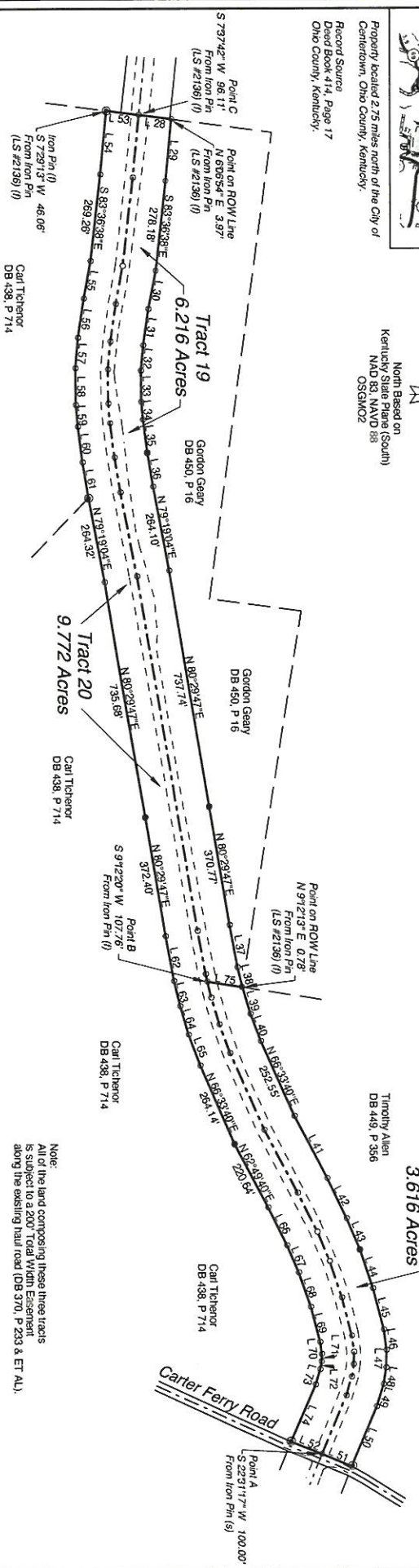
Property located 2.75 miles north of the City of Centertown, Ohio County, Kentucky.
 Record Source: Deed Book 414, Page 17 Ohio County, Kentucky.



OHIO COUNTY KENTUCKY JUNE 27, 2023

This property is subject to any & all easements and /or right of ways of record.
 100% of this survey was performed using Hemisphere S321 dual frequency RTK equipment.
 Right of ways established per State Statute (Min. 15' from center) Location of Ditches, Fences and adjoining property corners

Client & Owner
ERP ENVIRONMENTAL FUND, INC.
216 School Drive
Shrewsbury, WV 25015



ERP Haul Road Tracts
 DRAWN BY: GNB
 REVISIONS:
 DATE: 06-27-23 APPROVED BY: WTC
 BIGGESTAFF, WARD & ASSOCIATES, PLLC
 WILLIAM T. CRUME, PLS #3862
 125 E. CENTER STREET, PO BOX 191
 HARTFORD, KY 42347
 PHONE: (270) 298-0257

Line Table-Center Line Of Haul Road

Line	Bearing	Distance
Line A	N 67°16'47.7\"	195.47'
1	N 73°22'58.7\"	60.80'
2	N 80°17'24.1\"	30.17'
3	N 88°54'35.5\"	53.40'
4	S 82°38'00.0\"	52.40'
5	S 75°27'30.0\"	121.70'
6	S 71°29'52.0\"	118.85'
7	S 67°11'20.0\"	97.90'
8	S 63°55'28.0\"	133.76'
9	S 62°49'40.0\"	218.34'
10	S 60°53'47.0\"	252.83'
11	S 57°23'56.0\"	56.04'
12	S 76°19'35.0\"	50.86'
13	S 79°19'35.0\"	23.86'
14	S 79°33'59.0\"	138.03'
15	S 80°23'14.0\"	190.23'
16	S 80°23'14.0\"	284.23'
17	S 82°38'00.0\"	106.77'
18	S 84°57'42.0\"	108.02'
19	S 89°30'54.0\"	61.24'
20	N 84°49'52.0\"	93.22'
21	N 79°29'08.0\"	118.97'
22	N 83°36'28.0\"	273.72'
23	N 84°35'45.0\"	194.62'

Line Table

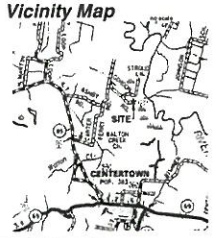
Line	Bearing	Distance	Line	Bearing	Distance
28	N 73°10'08.0\"	100.07'	55	S 78°29'08.0\"	117.29'
29	S 67°44'19.0\"	19.74'	56	S 81°42'08.0\"	122.34'
30	S 78°29'08.0\"	120.61'	57	S 84°46'28.0\"	93.87'
31	S 81°42'28.0\"	112.91'	58	N 89°30'54.0\"	113.71'
32	S 84°46'27.0\"	78.57'	59	N 84°57'42.0\"	67.25'
33	N 89°30'54.0\"	95.78'	60	N 82°38'00.0\"	110.56'
34	N 84°57'42.0\"	55.23'	61	N 80°23'14.0\"	119.99'
35	N 80°23'14.0\"	106.13'	62	N 76°19'35.0\"	80.10'
36	N 76°19'35.0\"	132.39'	63	N 73°23'56.0\"	92.02'
37	N 73°23'56.0\"	68.14'	64	N 69°27'57.0\"	101.55'
38	N 69°27'57.0\"	63.23'	65	N 63°55'28.0\"	129.36'
39	N 63°55'28.0\"	88.14'	66	N 57°23'30.0\"	91.29'
40	N 57°23'30.0\"	74.05'	67	N 51°29'02.0\"	112.10'
41	N 51°29'02.0\"	88.61'	68	N 45°15'55.0\"	36.84'
42	N 45°15'55.0\"	104.51'	69	N 38°02'02.0\"	24.59'
43	N 38°02'02.0\"	126.07'	70	S 89°17'23.0\"	49.23'
44	N 32°22'58.0\"	64.16'	71	S 92°28'58.0\"	48.23'
45	N 25°27'30.0\"	53.46'	72	S 93°22'58.0\"	49.23'
46	N 17°29'51.0\"	71.96'	73	N 91°22'00.0\"	103.54'
47	N 9°30'54.0\"	55.14'			
48	S 0°16'47.0\"	200.45'			
49	S 7°16'47.0\"	100.00'			
50	S 13°22'58.0\"	100.00'			
51	S 18°29'08.0\"	100.00'			
52	S 23°11'20.0\"	100.00'			
53	S 27°14'27.0\"	100.00'			
54	S 31'46'51.0\"	100.00'			
55	S 34'53'45.0\"	197.48'			

SCALE 1" = 300'

Map No. 211830C0235 D
 Date: June 2, 2011

SURVEYOR'S CERTIFICATE
 I hereby certify that the survey depicted by this plat was performed under my direct supervision and the method of GPS. The undisturbed natural surface of closure (ratio) of the survey was 1:10,000. The survey and plat were not adjusted unless noted below. This survey and plat meets the regular requirements of a Certified Survey of Accuracy (CSA) as defined in the Kentucky Surveying Act, KRS 18.150. Survey was completed by me on June 27, 2023.
 and signed by me on July 7, 2023.

William T. Crume, PLS #3862



**OHIO COUNTY
KENTUCKY
JUNE 6, 2023**

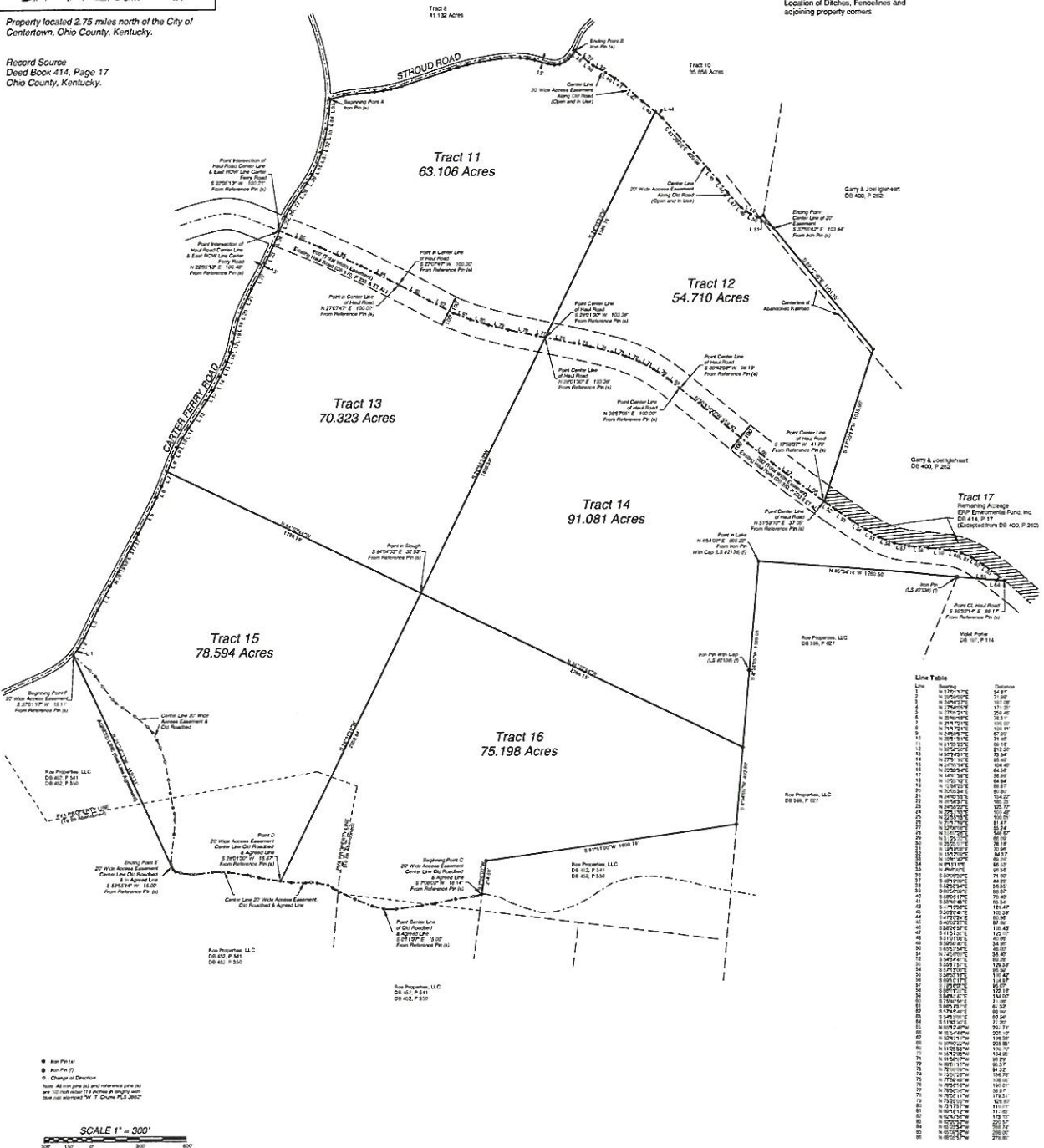
**Client & Owner
ERP ENVIRONMENTAL FUND, INC.
216 School Drive
Shrewsbury, WV 25015**

This property is subject to any & all easements and / or right of ways of record.
100% of this survey was performed using Hemisphere S321 dual frequency RTK equipment.

Right of ways established per: State Statute (Min. 15 from center) Location of Ditches, Fences and adjoining property corners

Property located 2.75 miles north of the City of Centertown, Ohio County, Kentucky.

Record Source: Deed Book 414, Page 17 Ohio County, Kentucky.



Line Table

Line	Bearing	Distance
1	N 12°12'17.76\"	54.87
2	N 12°12'17.76\"	11.88
3	N 20°29'21.76\"	71.20
4	N 20°29'21.76\"	25.20
5	N 20°29'21.76\"	76.17
6	N 20°29'21.76\"	100.00
7	N 20°29'21.76\"	87.91
8	N 20°29'21.76\"	71.46
9	N 20°29'21.76\"	88.18
10	N 20°29'21.76\"	72.49
11	N 20°29'21.76\"	88.49
12	N 20°29'21.76\"	84.18
13	N 20°29'21.76\"	88.87
14	N 20°29'21.76\"	88.87
15	N 20°29'21.76\"	88.87
16	N 20°29'21.76\"	88.87
17	N 20°29'21.76\"	88.87
18	N 20°29'21.76\"	88.87
19	N 20°29'21.76\"	88.87
20	N 20°29'21.76\"	88.87
21	N 20°29'21.76\"	88.87
22	N 20°29'21.76\"	88.87
23	N 20°29'21.76\"	88.87
24	N 20°29'21.76\"	88.87
25	N 20°29'21.76\"	88.87
26	N 20°29'21.76\"	88.87
27	N 20°29'21.76\"	88.87
28	N 20°29'21.76\"	88.87
29	N 20°29'21.76\"	88.87
30	N 20°29'21.76\"	88.87
31	N 20°29'21.76\"	88.87
32	N 20°29'21.76\"	88.87
33	N 20°29'21.76\"	88.87
34	N 20°29'21.76\"	88.87
35	N 20°29'21.76\"	88.87
36	N 20°29'21.76\"	88.87
37	N 20°29'21.76\"	88.87
38	N 20°29'21.76\"	88.87
39	N 20°29'21.76\"	88.87
40	N 20°29'21.76\"	88.87
41	N 20°29'21.76\"	88.87
42	N 20°29'21.76\"	88.87
43	N 20°29'21.76\"	88.87
44	N 20°29'21.76\"	88.87
45	N 20°29'21.76\"	88.87
46	N 20°29'21.76\"	88.87
47	N 20°29'21.76\"	88.87
48	N 20°29'21.76\"	88.87
49	N 20°29'21.76\"	88.87
50	N 20°29'21.76\"	88.87
51	N 20°29'21.76\"	88.87
52	N 20°29'21.76\"	88.87
53	N 20°29'21.76\"	88.87
54	N 20°29'21.76\"	88.87
55	N 20°29'21.76\"	88.87
56	N 20°29'21.76\"	88.87
57	N 20°29'21.76\"	88.87
58	N 20°29'21.76\"	88.87
59	N 20°29'21.76\"	88.87
60	N 20°29'21.76\"	88.87
61	N 20°29'21.76\"	88.87
62	N 20°29'21.76\"	88.87
63	N 20°29'21.76\"	88.87
64	N 20°29'21.76\"	88.87
65	N 20°29'21.76\"	88.87
66	N 20°29'21.76\"	88.87
67	N 20°29'21.76\"	88.87
68	N 20°29'21.76\"	88.87
69	N 20°29'21.76\"	88.87
70	N 20°29'21.76\"	88.87
71	N 20°29'21.76\"	88.87
72	N 20°29'21.76\"	88.87
73	N 20°29'21.76\"	88.87
74	N 20°29'21.76\"	88.87
75	N 20°29'21.76\"	88.87
76	N 20°29'21.76\"	88.87
77	N 20°29'21.76\"	88.87
78	N 20°29'21.76\"	88.87
79	N 20°29'21.76\"	88.87
80	N 20°29'21.76\"	88.87

**ERP DIVISION -
TRACTS 11-16**

SCALE: 1" = 300' DRAWN BY: GNB REVISOR:
DATE: 06-06-23 APPROVED BY: WTC

BIGGERSTAFF, WARD & ASSOCIATES, PLLC
WILLIAM T. CRUME, PLS #3862
125 E. CENTER STREET, PO BOX 191
HARTFORD, KY 42347
PHONE: (270) 298-0257

DRAWING NO. 02740

SURVEYOR'S CERTIFICATE
I hereby certify that the survey depicted by this plat was performed under my direct supervision by the method of GPS. The unadjusted mathematical error of closure ratio of the survey was 1 : 110,583, and was not adjusted unless noted below. This survey and plat meets the requirements of a rural boundary survey as described in the Minimum Technical Standards, 201 KAR 18.150. Survey was completed by me on June 6, 2023, and signed by me on June 26, 2023.

Tract 11
Line Table - 20' Wide Access Easement

Point	Bearing	Distance
1	N 20°29'21.76\"	88.87
2	N 20°29'21.76\"	88.87
3	N 20°29'21.76\"	88.87
4	N 20°29'21.76\"	88.87
5	N 20°29'21.76\"	88.87
6	N 20°29'21.76\"	88.87
7	N 20°29'21.76\"	88.87
8	N 20°29'21.76\"	88.87
9	N 20°29'21.76\"	88.87
10	N 20°29'21.76\"	88.87
11	N 20°29'21.76\"	88.87
12	N 20°29'21.76\"	88.87
13	N 20°29'21.76\"	88.87
14	N 20°29'21.76\"	88.87
15	N 20°29'21.76\"	88.87
16	N 20°29'21.76\"	88.87
17	N 20°29'21.76\"	88.87
18	N 20°29'21.76\"	88.87
19	N 20°29'21.76\"	88.87
20	N 20°29'21.76\"	88.87
21	N 20°29'21.76\"	88.87
22	N 20°29'21.76\"	88.87
23	N 20°29'21.76\"	88.87
24	N 20°29'21.76\"	88.87
25	N 20°29'21.76\"	88.87
26	N 20°29'21.76\"	88.87
27	N 20°29'21.76\"	88.87
28	N 20°29'21.76\"	88.87
29	N 20°29'21.76\"	88.87
30	N 20°29'21.76\"	88.87
31	N 20°29'21.76\"	88.87
32	N 20°29'21.76\"	88.87
33	N 20°29'21.76\"	88.87
34	N 20°29'21.76\"	88.87
35	N 20°29'21.76\"	88.87
36	N 20°29'21.76\"	88.87
37	N 20°29'21.76\"	88.87
38	N 20°29'21.76\"	88.87
39	N 20°29'21.76\"	88.87
40	N 20°29'21.76\"	88.87
41	N 20°29'21.76\"	88.87
42	N 20°29'21.76\"	88.87
43	N 20°29'21.76\"	88.87
44	N 20°29'21.76\"	88.87
45	N 20°29'21.76\"	88.87
46	N 20°29'21.76\"	88.87
47	N 20°29'21.76\"	88.87
48	N 20°29'21.76\"	88.87
49	N 20°29'21.76\"	88.87
50	N 20°29'21.76\"	88.87
51	N 20°29'21.76\"	88.87
52	N 20°29'21.76\"	88.87
53	N 20°29'21.76\"	88.87
54	N 20°29'21.76\"	88.87
55	N 20°29'21.76\"	88.87
56	N 20°29'21.76\"	88.87
57	N 20°29'21.76\"	88.87
58	N 20°29'21.76\"	88.87
59	N 20°29'21.76\"	88.87
60	N 20°29'21.76\"	88.87
61	N 20°29'21.76\"	88.87
62	N 20°29'21.76\"	88.87
63	N 20°29'21.76\"	88.87
64	N 20°29'21.76\"	88.87
65	N 20°29'21.76\"	88.87
66	N 20°29'21.76\"	88.87
67	N 20°29'21.76\"	88.87
68	N 20°29'21.76\"	88.87
69	N 20°29'21.76\"	88.87
70	N 20°29'21.76\"	88.87
71	N 20°29'21.76\"	88.87
72	N 20°29'21.76\"	88.87
73	N 20°29'21.76\"	88.87
74	N 20°29'21.76\"	88.87
75	N 20°29'21.76\"	88.87
76	N 20°29'21.76\"	88.87
77	N 20°29'21.76\"	88.87
78	N 20°29'21.76\"	88.87
79	N 20°29'21.76\"	88.87
80	N 20°29'21.76\"	88.87