

AUCTION

Tuesday, January 26th, 10:00 AM

Location: HWY 138 and HWY 1155, Rumsey, KY. From Calhoun, head south over the Green River to Hwy 138. Watch for signs!

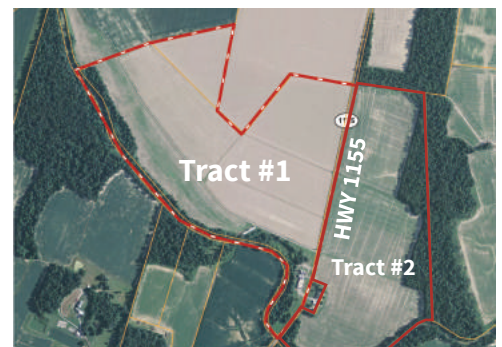
The Charles Green Heirs have authorized Kurtz Auction and Realty Co. to sell the following **regardless of price:**

376 ACRES OF MOSTLY TILLABLE FARM LAND



Tract 1

- 99 Acres
- McLean County FSA office calls for 90.19 acres of tillable cropland
- Located on the west side of Hwy 1155 at Cyress Creek
- Primary soil types are Karnak silty clay, McGary and Otwood silt loams
- Approximately 2956' of frontage on Hwy 1155
- Improvements include a 45' x 90' open span building and grain bins



Inspection anytime!

You may walk or drive around on this farm at your own risk.

MORE INFO ON REVERSE SIDE

For more information go to kurtzauction.com or contact Clay Taylor, Auctioneer

Terms: 10% down at the auction with the balance by March 12, 2021. Farming rights will be granted the day of sale. Full possession with delivery of deed. Seller is transferring all mineral rights they own if any. Some minerals have been previously reserved. Purchaser will pay 2021 property taxes. Attendees are expected to maintain social distancing and abide by all the other directives issued by the Governor regarding Covid-19.

Owner: Charles Green Farms, LLC

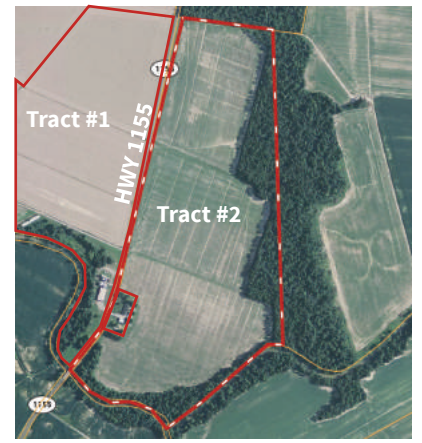
800-264-1204
kurtzauction.com

Announcements made at auction take precedence over printed material.

KURTZ
AUCTION & REALTY

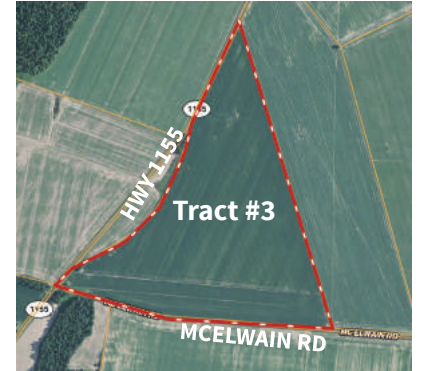
Tract 2

- 80.64 Acres
- McLean County FSA office calls for 61.3 acres of tillable cropland
- Located on the east side of Hwy 1155 at Cypress creek
- Primary soil types are Karnak silty clay, McGary, Otwood and Melvin silt loams
- Approximately 2640' of frontage on HWY 1155.



Tract 3

- 80 Acres
- McLean County FSA office calls for 79.52 acres of tillable cropland
- Located at the intersection of Hwy 1155 and McElwain Road
- Primary soil types include Karnak silty clay and McGary silt loam
- Approximately 1395' of frontage on Hwy 1155 and 2750' of frontage on McElwain Rd.



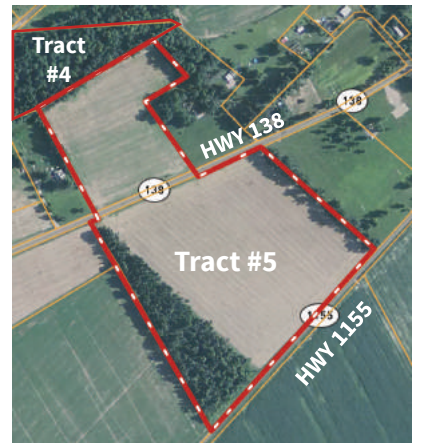
Tract 4

- 88.7 Acres
- McLean County FSA office calls for 65.08 acres of tillable cropland
- Located on the north and south side of Hwy 138
- Primary soil types are Melvin, Karnak, Otwood and Weinbach silt loams
- Approximately 1705' of frontage on Hwy 138 and 1140' on Howard Lane
- Approximately 2680' of Green River frontage



Tract 5

- 27.75 Acres
- McLean County FSA office calls for 21.79 acres of tillable cropland
- Located on the north and south side of Hwy 138
- Primary soil types are Melvin, Otwood and Weinbach silt loams
- Approximately 825' of frontage on Hwy 138



*Maps not to same scale

MORE INFO ON REVERSE SIDE

For more information go to kurtzauction.com or contact Clay Taylor, Auctioneer

Terms: 10% down at the auction with the balance by March 12, 2021. Farming rights will be granted the day of sale. Full possession with delivery of deed. Seller is transferring all mineral rights they own if any. Some minerals have been previously reserved. Purchaser will pay 2021 property taxes. Attendees are expected to maintain social distancing and abide by all the other directives issued by the Governor regarding Covid-19.

Owner: Charles Green Farms, LLC

800-264-1204
kurtzauction.com

Announcements made at auction take precedence over printed material.

KURTZ
AUCTION & REALTY