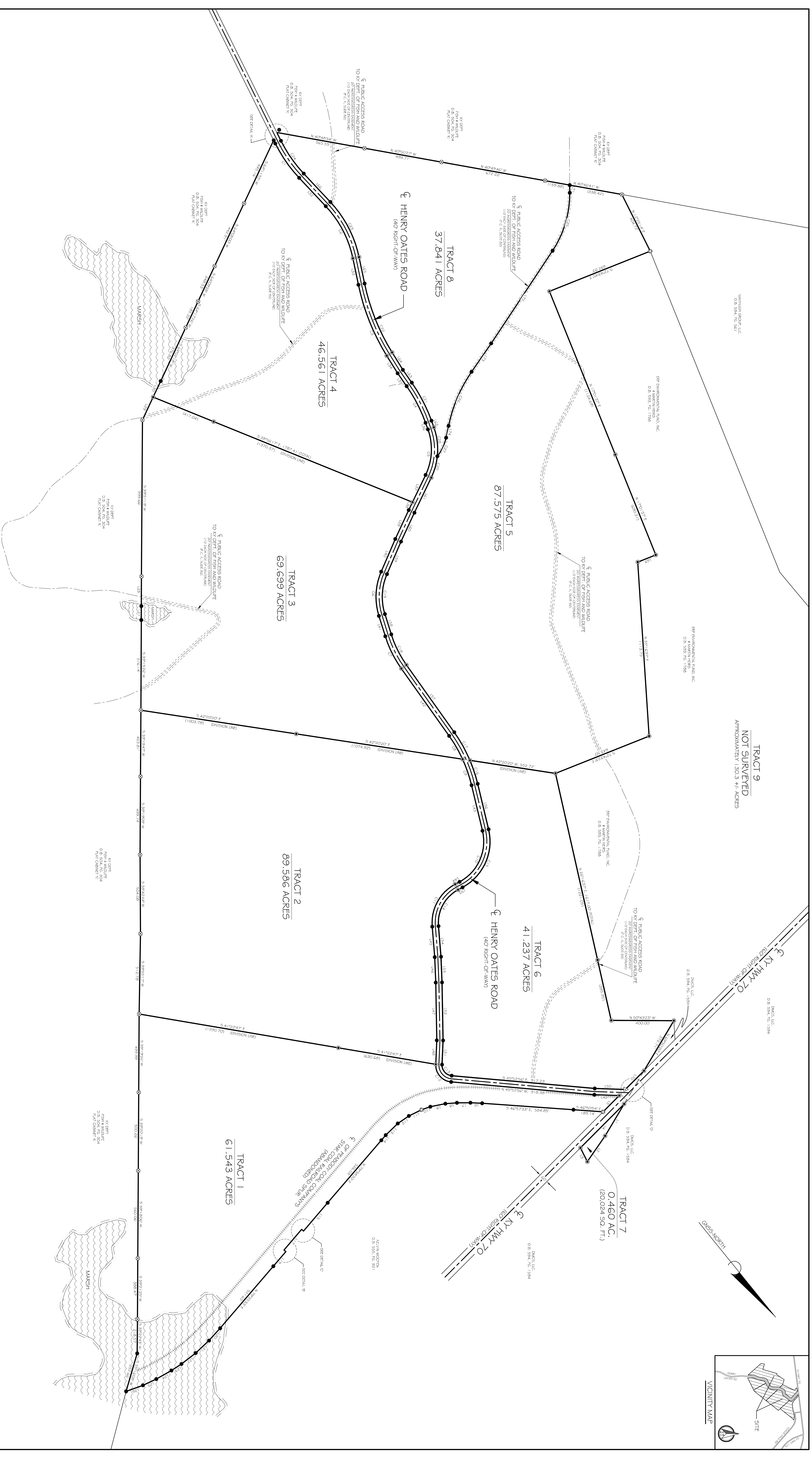
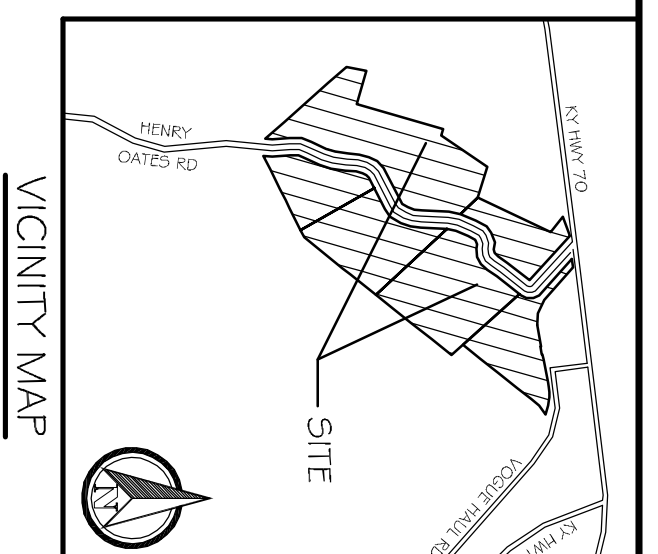
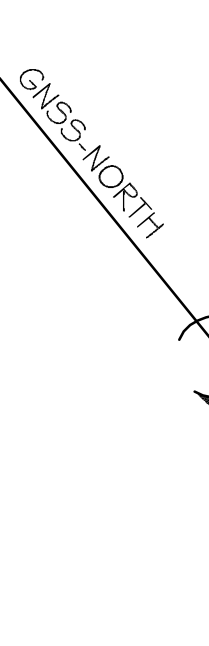


WARRIOR ASSET P, LLC  
D.B. 594, No. 561

EPF ENVIRONMENTAL FUND, INC.  
D.B. 593, No. 1768

TRACT 9  
NOT SURVEYED  
APPROXIMATELY 130.3 +/- ACRES

BAUC, LLC  
D.B. 594, No. 1584



**SURVEYOR'S NOTES:**

THE PROPERTY DESCRIBED HEREON IS SUBJECT TO ALL LEGAL EASEMENTS AND RIGHTS OF WAY OF RECORD AND ALL FACTS AND CONDITIONS PERTAINING TO THE SAME. THE SURVEYOR HAS CONDUCTED A VISUAL INSPECTION OF THE PROPERTY AND HAS FOUND NO EVIDENCE OF ENCROACHMENTS OR OTHER VIOLATIONS OF ANY APPLICABLE LAWS, ORDINANCES OR REGULATIONS. THE PLAT AND SURVEY REPRESENTED HEREON COMPLY WITH 2011 K.A.C. 161.150.

**SURVEYOR'S CERTIFICATION**

I DO HEREBY CERTIFY THAT THIS PLAT EMPHATICALLY REPRESENTS THE TRUE AND ACCURATE POSITION OF ALL BOUNDARIES AND CORNERS OF THE LAND DESCRIBED HEREON. I AM A LICENSED SURVEYOR IN THE STATE OF KENTUCKY AND I HAVE PERSONALLY CONDUCTED THE SURVEY AND THE INFORMATION SHOWN HEREON IS TRUE AND CORRECT TO THE BEST OF MY KNOWLEDGE AND BELIEF.

**LINE TABLE**

LINE NO.	BEARING	DISTANCE	LINE NO.	BEARING	DISTANCE
1	N 89° 51' 15.12" E	320.00	101	N 89° 51' 15.12" E	320.00
2	S 89° 51' 15.12" W	320.00	102	S 89° 51' 15.12" W	320.00
3	N 89° 51' 15.12" E	320.00	103	N 89° 51' 15.12" E	320.00
4	S 89° 51' 15.12" W	320.00	104	S 89° 51' 15.12" W	320.00
5	N 89° 51' 15.12" E	320.00	105	N 89° 51' 15.12" E	320.00
6	S 89° 51' 15.12" W	320.00	106	S 89° 51' 15.12" W	320.00
7	N 89° 51' 15.12" E	320.00	107	N 89° 51' 15.12" E	320.00
8	S 89° 51' 15.12" W	320.00	108	S 89° 51' 15.12" W	320.00
9	N 89° 51' 15.12" E	320.00	109	N 89° 51' 15.12" E	320.00
10	S 89° 51' 15.12" W	320.00	110	S 89° 51' 15.12" W	320.00
11	N 89° 51' 15.12" E	320.00	111	N 89° 51' 15.12" E	320.00
12	S 89° 51' 15.12" W	320.00	112	S 89° 51' 15.12" W	320.00
13	N 89° 51' 15.12" E	320.00	113	N 89° 51' 15.12" E	320.00
14	S 89° 51' 15.12" W	320.00	114	S 89° 51' 15.12" W	320.00
15	N 89° 51' 15.12" E	320.00	115	N 89° 51' 15.12" E	320.00
16	S 89° 51' 15.12" W	320.00	116	S 89° 51' 15.12" W	320.00
17	N 89° 51' 15.12" E	320.00	117	N 89° 51' 15.12" E	320.00
18	S 89° 51' 15.12" W	320.00	118	S 89° 51' 15.12" W	320.00
19	N 89° 51' 15.12" E	320.00	119	N 89° 51' 15.12" E	320.00
20	S 89° 51' 15.12" W	320.00	120	S 89° 51' 15.12" W	320.00
21	N 89° 51' 15.12" E	320.00	121	N 89° 51' 15.12" E	320.00
22	S 89° 51' 15.12" W	320.00	122	S 89° 51' 15.12" W	320.00
23	N 89° 51' 15.12" E	320.00	123	N 89° 51' 15.12" E	320.00
24	S 89° 51' 15.12" W	320.00	124	S 89° 51' 15.12" W	320.00
25	N 89° 51' 15.12" E	320.00	125	N 89° 51' 15.12" E	320.00
26	S 89° 51' 15.12" W	320.00	126	S 89° 51' 15.12" W	320.00
27	N 89° 51' 15.12" E	320.00	127	N 89° 51' 15.12" E	320.00
28	S 89° 51' 15.12" W	320.00	128	S 89° 51' 15.12" W	320.00
29	N 89° 51' 15.12" E	320.00	129	N 89° 51' 15.12" E	320.00
30	S 89° 51' 15.12" W	320.00	130	S 89° 51' 15.12" W	320.00
31	N 89° 51' 15.12" E	320.00	131	N 89° 51' 15.12" E	320.00
32	S 89° 51' 15.12" W	320.00	132	S 89° 51' 15.12" W	320.00
33	N 89° 51' 15.12" E	320.00	133	N 89° 51' 15.12" E	320.00
34	S 89° 51' 15.12" W	320.00	134	S 89° 51' 15.12" W	320.00
35	N 89° 51' 15.12" E	320.00	135	N 89° 51' 15.12" E	320.00
36	S 89° 51' 15.12" W	320.00	136	S 89° 51' 15.12" W	320.00
37	N 89° 51' 15.12" E	320.00	137	N 89° 51' 15.12" E	320.00
38	S 89° 51' 15.12" W	320.00	138	S 89° 51' 15.12" W	320.00
39	N 89° 51' 15.12" E	320.00	139	N 89° 51' 15.12" E	320.00
40	S 89° 51' 15.12" W	320.00	140	S 89° 51' 15.12" W	320.00
41	N 89° 51' 15.12" E	320.00	141	N 89° 51' 15.12" E	320.00
42	S 89° 51' 15.12" W	320.00	142	S 89° 51' 15.12" W	320.00
43	N 89° 51' 15.12" E	320.00	143	N 89° 51' 15.12" E	320.00
44	S 89° 51' 15.12" W	320.00	144	S 89° 51' 15.12" W	320.00
45	N 89° 51' 15.12" E	320.00	145	N 89° 51' 15.12" E	320.00
46	S 89° 51' 15.12" W	320.00	146	S 89° 51' 15.12" W	320.00
47	N 89° 51' 15.12" E	320.00	147	N 89° 51' 15.12" E	320.00
48	S 89° 51' 15.12" W	320.00	148	S 89° 51' 15.12" W	320.00
49	N 89° 51' 15.12" E	320.00	149	N 89° 51' 15.12" E	320.00
50	S 89° 51' 15.12" W	320.00	150	S 89° 51' 15.12" W	320.00
51	N 89° 51' 15.12" E	320.00	151	N 89° 51' 15.12" E	320.00
52	S 89° 51' 15.12" W	320.00	152	S 89° 51' 15.12" W	320.00
53	N 89° 51' 15.12" E	320.00	153	N 89° 51' 15.12" E	320.00
54	S 89° 51' 15.12" W	320.00	154	S 89° 51' 15.12" W	320.00
55	N 89° 51' 15.12" E	320.00	155	N 89° 51' 15.12" E	320.00
56	S 89° 51' 15.12" W	320.00	156	S 89° 51' 15.12" W	320.00
57	N 89° 51' 15.12" E	320.00	157	N 89° 51' 15.12" E	320.00
58	S 89° 51' 15.12" W	320.00	158	S 89° 51' 15.12" W	320.00
59	N 89° 51' 15.12" E	320.00	159	N 89° 51' 15.12" E	320.00
60	S 89° 51' 15.12" W	320.00	160	S 89° 51' 15.12" W	320.00
61	N 89° 51' 15.12" E	320.00	161	N 89° 51' 15.12" E	320.00
62	S 89° 51' 15.12" W	320.00	162	S 89° 51' 15.12" W	320.00
63	N 89° 51' 15.12" E	320.00	163	N 89° 51' 15.12" E	320.00
64	S 89° 51' 15.12" W	320.00	164	S 89° 51' 15.12" W	320.00
65	N 89° 51' 15.12" E	320.00	165	N 89° 51' 15.12" E	320.00
66	S 89° 51' 15.12" W	320.00	166	S 89° 51' 15.12" W	320.00
67	N 89° 51' 15.12" E	320.00	167	N 89° 51' 15.12" E	320.00
68	S 89° 51' 15.12" W	320.00	168	S 89° 51' 15.12" W	320.00
69	N 89° 51' 15.12" E	320.00	169	N 89° 51' 15.12" E	320.00
70	S 89° 51' 15.12" W	320.00	170	S 89° 51' 15.12" W	320.00
71	N 89° 51' 15.12" E	320.00	171	N 89° 51' 15.12" E	320.00
72	S 89° 51' 15.12" W	320.00	172	S 89° 51' 15.12" W	320.00
73	N 89° 51' 15.12" E	320.00	173	N 89° 51' 15.12" E	320.00
74	S 89° 51' 15.12" W	320.00	174	S 89° 51' 15.12" W	320.00
75	N 89° 51' 15.12" E	320.00	175	N 89° 51' 15.12" E	320.00
76	S 89° 51' 15.12" W	320.00	176	S 89° 51' 15.12" W	320.00
77	N 89° 51' 15.12" E	320.00	177	N 89° 51' 15.12" E	320.00
78	S 89° 51' 15.12" W	320.00	178	S 89° 51' 15.12" W	320.00
79	N 89° 51' 15.12" E	320.00	179	N 89° 51' 15.12" E	320.00
80	S 89° 51' 15.12" W	320.00	180	S 89° 51' 15.12" W	320.00
81	N 89° 51' 15.12" E	320.00	181	N 89° 51' 15.12" E	320.00
82	S 89° 51' 15.12" W	320.00	182	S 89° 51' 15.12" W	320.00
83	N 89° 51' 15.12" E	320.00	183	N 89° 51' 15.12" E	320.00
84	S 89° 51' 15.12" W	320.00	184	S 89° 51' 15.12" W	320.00
85	N 89° 51' 15.12" E	320.00	185	N 89° 51' 15.12" E	320.00
86	S 89° 51' 15.12" W	320.00	186	S 89° 51' 15.12" W	320.00
87	N 89° 51' 15.12" E	320.00	187	N 89° 51' 15.12" E	320.00
88	S 89° 51' 15.12" W	320.00	188	S 89° 51' 15.12" W	320.00
89	N 89° 51' 15.12" E	320.00	189	N 89° 51' 15.12" E	320.00
90	S 89° 51' 15.12" W	320.00	190	S 89° 51' 15.12" W	320.00
91	N 89° 51' 15.12" E	320.00	191	N 89° 51' 15.12" E	320.00
92	S 89° 51' 15.12" W	320.00	192	S 89° 51' 15.12" W	320.00
93	N 89° 51' 15.12" E	320.00	193	N 89° 51' 15.12" E	320.00
94	S 89° 51' 15.12" W	320.00	194	S 89° 51' 15.12" W	320.00
95	N 89° 51' 15.12" E	320.00	195	N 89° 51' 15.12" E	320.00
96	S 89° 51' 15.12" W	320.00	196	S 89° 51' 15.12" W	320.00
97	N 89° 51' 15.12" E	320.00	197	N 89° 51' 15.12" E	320.00
98	S 89° 51' 15.12" W	320.00	198	S 89° 51' 15.12" W	320.00
99	N 89° 51' 15.12" E	320.00	199	N 89° 51' 15.12" E	320.00
100	S 89° 51' 15.12" W	320.00	200	S 89° 51' 15.12" W	320.00

**CURVE TABLE**

STATION	BEARING	DISTANCE	STATION	BEARING	DISTANCE
1	N 89° 51' 15.12" E	320.00	101	N 89° 51' 15.12" E	320.00
2	S 89° 51' 15.12" W	320.00	102	S 89° 51' 15.12" W	320.00
3	N 89° 51' 15.12" E	320.00	103	N 89° 51' 15.12" E	320.00
4	S 89° 51' 15.12" W	320.00	104	S 89° 51' 15.12" W	320.00
5	N 89° 51' 15.12" E	320.00	105	N 89° 51' 15.12" E	320.00
6	S 89° 51' 15.12" W	320.00	106	S 89° 51' 15.12" W	320.00
7	N 89° 51' 15.12" E	320.00	107	N 89° 51' 15.12" E	320.00
8	S 89° 51' 15.12" W	320.00	108	S 89° 51' 15.12" W	320.00
9	N 89° 51' 15.12" E	320.00	109	N 89° 51' 15.12" E	320.00
10	S 89° 51' 15.12" W	320.00	110	S 89° 51' 15.12" W	320.00
11	N 89° 51' 15.12" E	320.00	111	N 89° 51' 15.12" E	320.00
12	S 89° 51' 15.12" W	320.00	112	S 89° 51' 15.12" W	320.00
13	N 89° 51' 15.12" E	320.00	113	N 89° 51' 15.12" E	320.00
14	S 89° 51' 15.12" W	320.00	114	S 89° 51' 15.12" W	320.00
15	N 89° 51' 15.12" E	320.00	115	N 89° 51' 15.12" E	320.00
16	S 89° 51' 15.12" W	320.00	116	S 89° 51' 15.12" W	320.00
17	N 89° 51' 15.12" E	320.00	117	N 89° 51' 15.12" E	320.00
18	S 89° 51' 15.12" W	320.00	118	S 89° 51' 15.12" W	320.00
19	N 89° 51' 15.12" E	320.00	119	N 89° 51' 15.12" E	320.00
20	S 89° 51' 15.12" W	320.00	120	S 89° 51' 15.12" W	320.00
21	N 89° 51' 15.12" E	320.00	121	N 89° 51' 15.12" E	320.00
22	S 89° 51' 15.12" W	320.00	122	S 89° 51' 15.12" W	320.00
23	N 89° 51' 15.12" E	320.00	123	N 89° 51' 15.12" E	320.00
24	S 89° 51' 15.12" W	320.00	124	S 89° 51' 15.12" W	320.00
25	N 89° 51' 15.12" E	320.00	125	N 89° 51' 15.12" E	320.00
26	S 89° 51' 15.12" W	320.00	126	S 89° 51' 15.12" W	320.00
27	N 89° 51' 15.12" E	320.00	127	N 89° 51' 15.12" E	320.00
28	S 89° 51' 15.12" W	320.00	128	S 89° 51' 15.12" W	320.00
29	N 89° 51' 15.12" E	320.00	129	N 89° 51' 15.12" E	320.00
30	S 89° 51' 15.12" W	320.00	130	S 89° 51' 15.12" W	320.00
31	N 89° 51' 15.12" E	320.00	131	N 89° 51' 15.12" E	320.00
32	S 89° 51' 15.12" W	320.00	132	S 89° 51' 15.12" W	320.00
33	N 89° 51' 15.12" E	320.00	133	N 89° 51' 15.12" E	320.00
34	S 89° 51' 15.12" W	320.00	134	S 89° 51' 15.12" W	320.00
35	N 89° 51' 15.12" E	320.00	135	N 89° 51' 15.12" E	320.00