

AUCTION

Thursday, March 28th at 10:00 AM

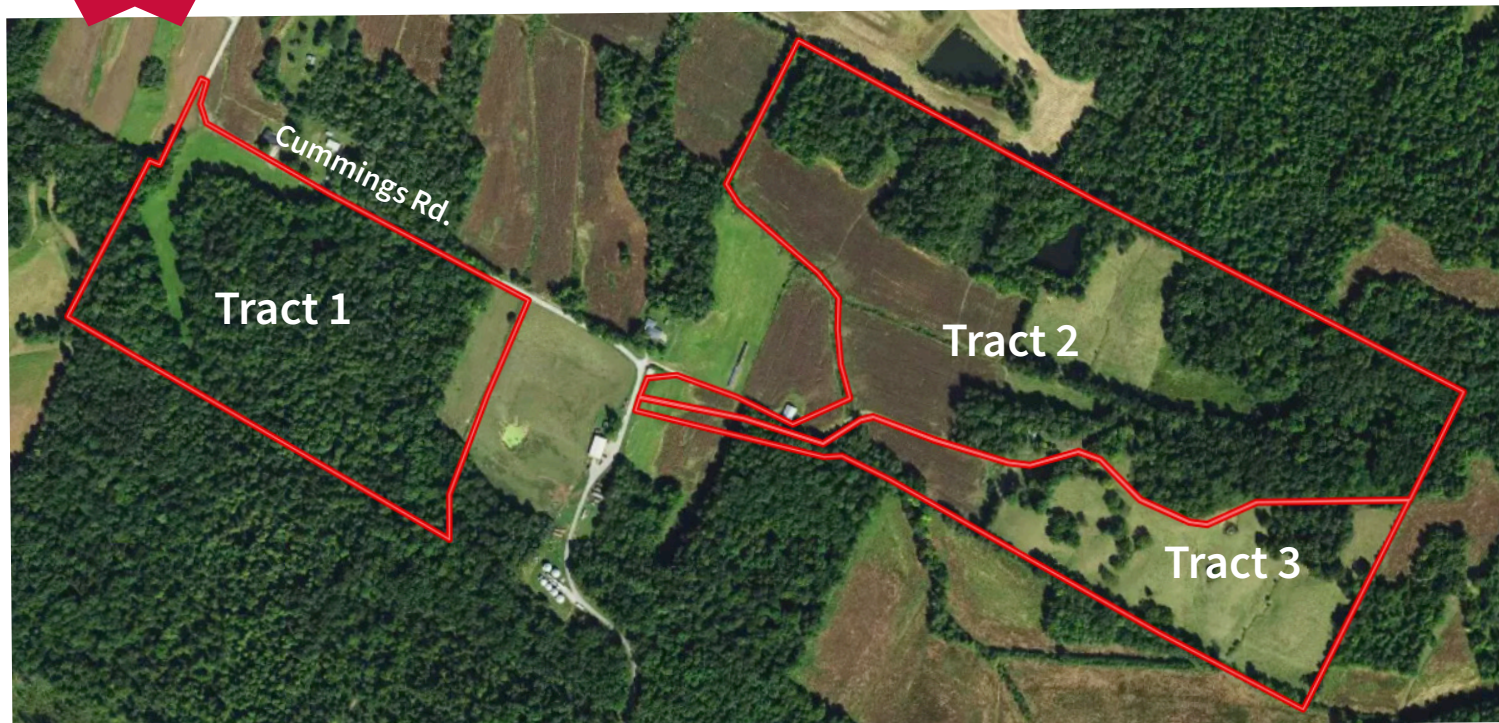
LOCATION: 10031 Cummings Road, Owensboro, KY.

From Owensboro, KY, head west on Hwy. 56 for approx. 11.5 miles to Cummings Road (Mount Saint Joseph). Head south on Cummings Road for approx. 3.4 miles to the property. **Watch for Signs!**

The Frances T. Clouse Heirs have authorized Kurtz Auction & Realty to sell the following **regardless of price:**

**NEW
SURVEY**

124.853 ACRES - 3 TRACTS



TRACT 1

- 34.750 Acres
- Mostly wooded with approximately 5 acres of open ground.
- 1,632' of road frontage on Cummings Road.
- Located in McLean County

TRACT 2

- 64.892 acres
- Approx. 28 acres of tillable land with the balance in woods.
- 3/4 acre lake
- 77' of road frontage on Cummings Road
- Soil types include Alford and Belknap silt loams.

TRACT 3

- 25.211 Acres
- Approx. 22 acres of tillable land with balance in woods
- 76' of road frontage on Cummings Road
- Soil types include Hosmer and Belknap silt loams.

Inspect the property anytime at your own risk.

TERMS: 10% down at the auction and the balance due on or before May 10, 2024. 2024 property taxes will be paid by the buyer. Farming rights granted on the day of the sale; full possession with delivery of deed.

FOR MORE INFORMATION CONTACT JIM GOETZ OR TYLER EDGE, AUCTIONEERS.

Owner: Frances T. Clouse Heirs

800-264-1204

kurtzauction.com



KURTZ

AUCTION & REALTY®

Announcements made at auction take precedence over printed material

2024